



Wall decoration

## Color sample

# SUNNO Plant Glazes No. 450

Order no.: 1297E • Last update: December 2025

### Elegant design with plant products

The color effects of the SUNNO Plant Glazes No. 450 are something very special due to the contained extracts of dye plants such as Reseda and madder roots.

The SUNNO Plant Glazes No. 450 are offered as color concentrates which need to be stirred into the SUNNO Glaze Binder No. 451 and are then applied on a white ground in a criss-cross motion or with movements in the form of a horizontal 8. Depending on whether several layers or only one layer was applied, there is a direct reflection of light at the colored surface which results in a very lively color effect.

The SUNNO Plant Glazes No. 450, stirred into a colorless binder, appear lighter or stronger depending on the concentration of the glaze. Surfaces appear more vivid the more layers are applied. There are color shades which are light-sensitive and color shades which are UV-resistant. Please check the technical data sheet.

Ask your LIVOS specialist dealer for advice or visit us online at [www.livos.de](http://www.livos.de). You can also call our hotline on **+49 (0) 5825 - 88 30**.

You can find the technical data sheets here:



### Processing note

**First dilute SUNNO Glaze Binder No. 451 with water at a ratio of 1:2. Then stir SUNNO Plant Glaze No. 450 into the binder solution, until the desired color is reached.** (You will find examples of different mixing ratios on the back.)

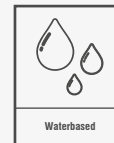
#### Build-up of untreated plaster

First coat: Priming with GRAVA Wall Primer Sealer No. 408  
Second coat: DUBRON Natural White Plaster No. 465

#### On woodchip wallpaper priming with DUBRON Natural Dispersion Paint No. 412.

#### On already painted plaster or wallpaper: check the adherence with DUBRON Natural Dispersion Paint No. 412, then

First coat: DUBRON Natural Dispersion Paint No. 412  
Second coat: DUBRON Natural White Plaster No. 465





450 - 053 **coreops** ■ coreopsis ■ mangue  
coreops ■ mango ■ coreops



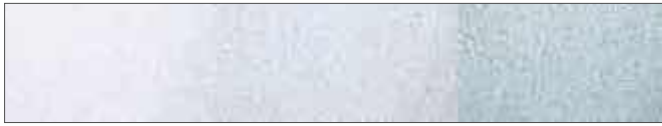
450 - 055 **krapport** ■ madder red ■ rouge grenat  
rojo de rubia ■ rosso granata ■ krapprød



450 - 056 **rosenrot** ■ rose red ■ rouge aubergine  
rojo de rosas ■ rosa melanzana ■ rosenrød



450 - 057 **lacrot** ■ lac-red ■ lilas ■ rojo lacre  
lacca rossa ■ lakkrød



450 - 060 **indigoblau** ■ indigo blue ■ bleu indigo  
azul índigo ■ blu indaco ■ indigoblå



450 - 061 **holunderblau** ■ elderberry blue ■ bleu sureau  
azul sauco ■ blu sambuco ■ hyllebærblå



450 - 063 **isländisch Moos** ■ icelandic moss ■ mousse d'Islande  
musgo islandés ■ muschio islandese ■ islandsk mose



450 - 051 **\*resedgelb** ■ mignonette yellow ■ jaune réséda  
amarillo reseda ■ pianta gialla ■ resedgul



450 - 052 **\*arnika** ■ arnica ■ orange arnica  
arnica ■ arnica ■ arnica



450 - 059 **\*eukalyptus** ■ eucalyptus ■ eucalyptus  
eucalipto ■ eucalipto ■ eukalyptus



450 - 062 **\*mistelgrün** ■ mistletoe green ■ vert gui  
verde muérdago ■ vischio verde ■ mistelteingrønn



450 - 064 **\*minze** ■ mint ■ menthe  
menta ■ menta ■ mint



450 - 064 **pfirsichblüte** ■ peach blossom ■ fleur de pêche  
fleur de pêche ■ fiore di pesca ■ ferskenblomst

\*Gekennzeichnete Farbtöne sind lichtempfindlich. Die Farbtöne können drucktechnisch bedingt vom Original abweichen. ■ \*The marked color tones are light-sensitive. Due to typographical differences, the color tones can be different from the original. \*Les tons de couleur marqués sont photosensibles. Pour des raisons d'impression, l'exactitude de la reproduction des couleurs ne peut être garantie. ■ Los colores pueden variar con respecto del original, debido a la técnica de impresión.